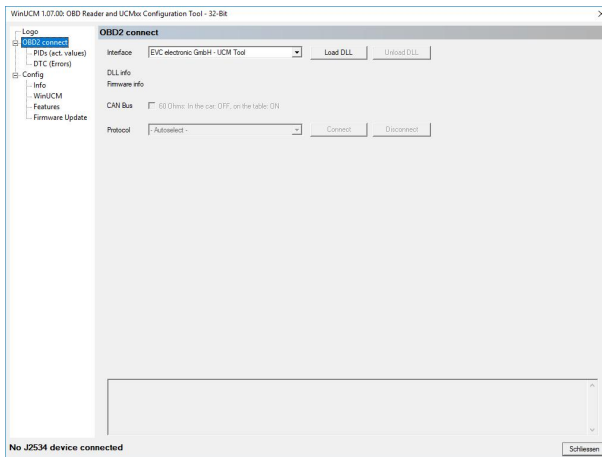


WinUCM / UCM100 Installation English

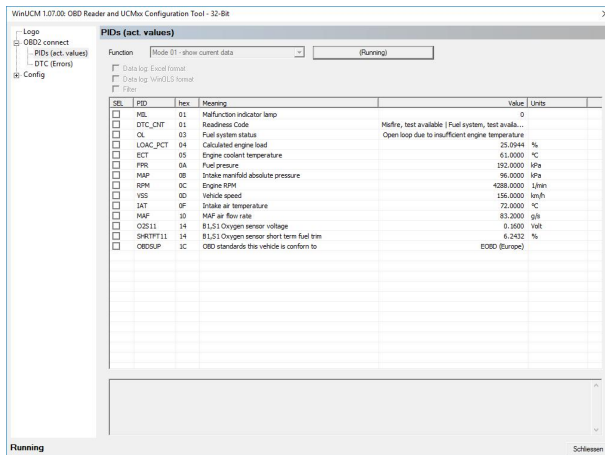
- Download WinUCM at: www.evc.de/en/download - WinUCM
- Install
- Start



- Press button „Load DLL“, Press button „Connect“

PIDs = actual values

- Goto PIDs, Press button “Start”

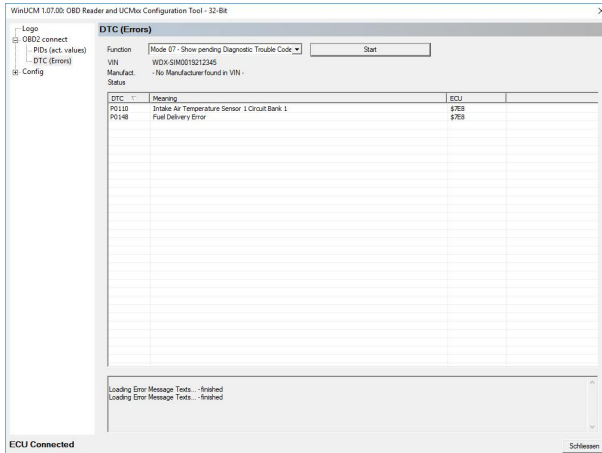


Once all possible values have been read from the control unit, you can choose which values you want to log. There are checkboxes before the appropriate items.

Logs can be saved as Excel and as ObdVisualizer files for import into WinOLS.

DTC = Read Error Memory

In the DropDown liste you can select the operating mode and press „Start“:



Configuration

Only if the DLL is not loaded the menu items under Config can be selected

Menu items:

- **Info:** The driver and the version number of the firmware in the UCM100 are displayed here.
- **WinUCM:** You can choose between German and English. Paths for log files can be set here, as standard firmware updates are stored in the application directory and log files on the desktop.
- **Features:** This menu item is used to download and save the purchased features. EnAj2534 and ObdVisu are required.
- **Firmware update:** Here, the firmware contained in the installation package can be programmed into the UCM100.



EVC electronic GmbH
Am Pfauenzehnt 11a
46539 Dinslaken
www.evc.de